

Creating Reliable Plans for DIY Assistive Technology



Jeff Kratochwill
Easterseals Wisconsin FARM Program Director
AgrAbility of Wisconsin Co-Director

Phone 608.279.9436

jkratochwill@eastersealswisconsin.com

Ned Stoller, Agricultural Engineer
Michigan AgrAbility

Objectives

- 1) Discuss what sources you use to find DIY assistive technology that farmers can build.
- 2) Discuss how you evaluate if a DIY project is a reliable idea for a farmer with disability to use.
- 3) Discuss how to take a DIY project and make it into plans that others could duplicate.

Sources for DIY Technology



Sources for DIY Technology

- Bring outside Agency (Equipment vendor, Extension, etc)
- Camera/Sketch design
- Farmer
- Hierarchy of Assistive technology

Sources for DIY Technology:

North Dakota State University Ag building plans

Midwest Plan Service Iowa State University

← → ↻ 🔍 <https://www.ag.ndsu.edu/extension-aben/buildingplans/swine>

NDSU NORTH DAKOTA STATE UNIVERSITY [ABOUT NDSU](#)

BUILDING PLANS

[ENHANC](#)

NDSU › [Building Plans](#) › [Swine](#)

Building Plans

- Beef
- Construction
- Crops
- Dairy
- Horse
- Housing
- Machinery
- Poultry
- Sheep
- Swine
- Miscellaneous

NDSU Extension Agricultural & Biosystems Engineering

Swine

[Share](#)

The plans abbreviation key was created to avoid repetition and aid in more complete descriptions.

Plans can be located quickly in this list by using the "Find" option in your browser to find key words.

Use the 'Ctrl + F' shortcut to bring up the "Find" box.

TITLE
HOG SELF FEEDER
EAR CORN SELF F
PORTABLE HOG HI
A-FRAME FARROW PORTABLE (SEE 58
HOG BARN, MODIF
HOG BARN, 8X12, C
FARROW BARN, 12 HO
LOW LAMTILE FI

IOWA STATE UNIVERSITY Search MWPS
MWPS – MidWest Plan Service A foundation of knowledge since 193

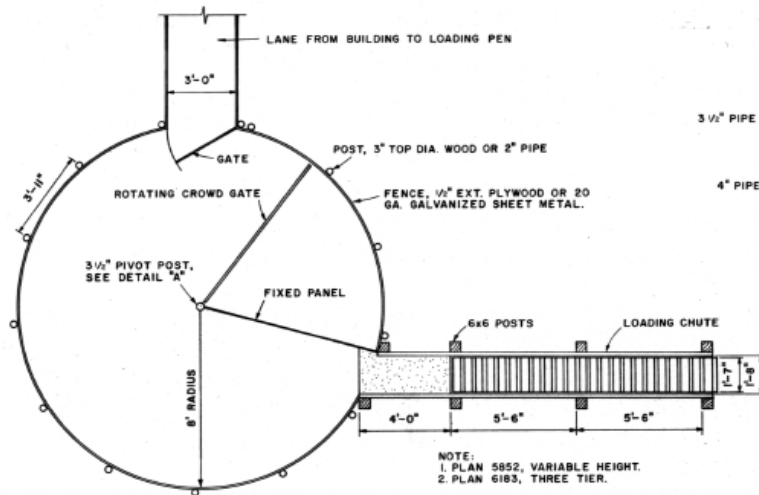
[Home](#) | [Contact Us](#) | [My Account](#) | [View Cart](#)

Free Building Plans & Materials

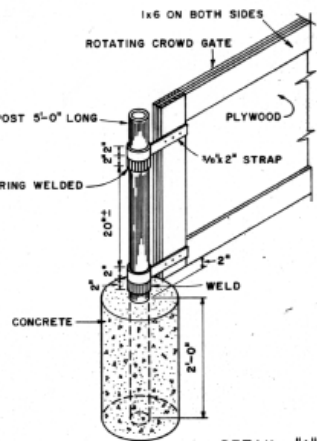
- **Free Building Plans** include the categories of: Beef, Dairy, Framing and Utility, Hay and Grain Storage, Milkhouse and Parlors, Sheep, Swine, Trusses, and Miscellaneous.
- **NDSU Building and Facility Plans** <http://www.ag.ndsu.edu/extension-aben/>
- **Other Free Materials**
 - Beef Cattle Handbook
 - Greenhouse Barns for Dairy Housing, AED-40
 - Poultry Equipment Plans, MWPS-5
 - Swine Housing and Equipment Handbook, MWPS-8

About Us >

Catalog

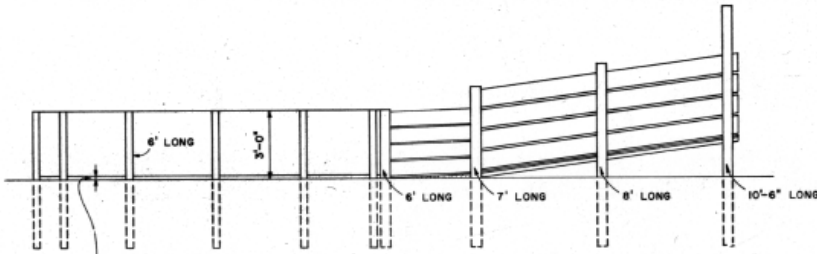


PLAN



DETAIL "A"

CAPACITY OF LOADING PENS		
DIAMETER (FT.)	FEEDER PIGS AT 2 SQ. FT.	MARKET HOGS AT 6 SQ. FT.
12	57	19
16	100	34
20	157	52
24	226	75
28	308	103
32	402	134



ELEVATION

LEAVE 2" CLEARANCE BETWEEN FENCE AND GROUND AND CONCRETE FLOOR

COOPERATIVE EXTENSION WORK IN AGRICULTURE AND HOME ECONOMICS

AND UNITED STATES DEPARTMENT OF AGRICULTURE COOPERATING

CIRCULAR LOADING PEN FOR SWINE

N.C. '75 6223 SHEET 1 OF 1

Based on the invention of
Bardwell Farms

<https://www.facebook.com/BardwellFarms/>

https://youtu.be/LHhpWHRvKsl?si=pUXo_avGf11RRQYi

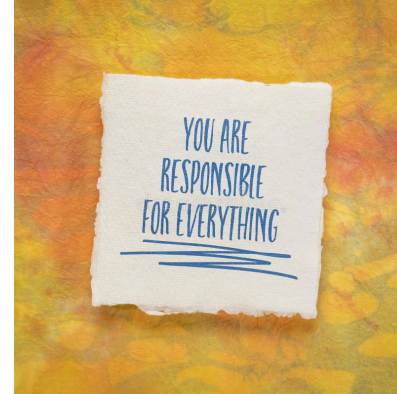
What are YOUR sources of DIY AT ideas?



Evaluate AT Reliability

- Individualized assessment
- Farmer interview
- Follow-up visit
- Pro/Con list

Evaluate DIY AT Reliability



AT
Reliability:
Is it safe?

Evaluating Agricultural Workplace Assistive Technology for Secondary Injury Hazards

An Assessment Tool for Professionals Who Assist Farmers and Ranchers with Disabilities



AT Reliability:
How do we
know if it
really works?

How do YOU
evaluate an
idea before
suggesting
it?

Build an egg washer for less than \$25



Proposing a new AT DIY idea



I want to give a huge shoutout to AgrAbility of Wisconsin and Wisconsin Department of Workforce Development DVR program for making this piece of equipment a reality for John. Equipped with a left hand only joystick and foot pedals to operate the bucket. Sometimes it's really hard to find anything that comes easy like it used to for him, operating the skid loader being one of them. Thanks to these two incredible programs, this was delivered to him today.





Lets talk about successful DIY AT projects that you want to make into shareable plans.



Edit

Hay Bale Dolly Assistive Technology

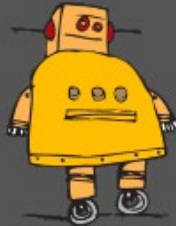
♥ 1 👁 1.3K



Edit




Fold-up Tractor Step Assistive Technology

★ ♥ 2 👁 3.9K



Categories

-  Circuits
-  Workshop
-  Craft
-  Cooking

-  Living
-  Outside
-  Teachers

About Us

- [Who We Are](#)
- [Why Publish?](#)

Resources

- [Sitemap](#)
- [Help](#)
- [Contact](#)

Discussion

Should AgrAbility create reliable peer reviewed plans for do-it-yourself (DIY) agricultural assistive technology? Would this be more credible than YouTube to learn about DIY projects? Could we keep it up-to-date and easy to find information? How would we use the Toolbox for this?

Jeff Kratochwill

Easterseals Wisconsin FARM Program Director

AgrAbility of Wisconsin Co-Director

Phone 608.279.9436

jkratochwill@eastersealswisconsin.com

Ned Stoller, Agricultural Engineer

Michigan AgrAbility

616-648-2712

